

Partnering with Public Health: Linking Patients to Care

EHE Collaborative Learning Series Event

Katie Macomber, MPH

Director, Bureau of HIV/STI Programs



Mission

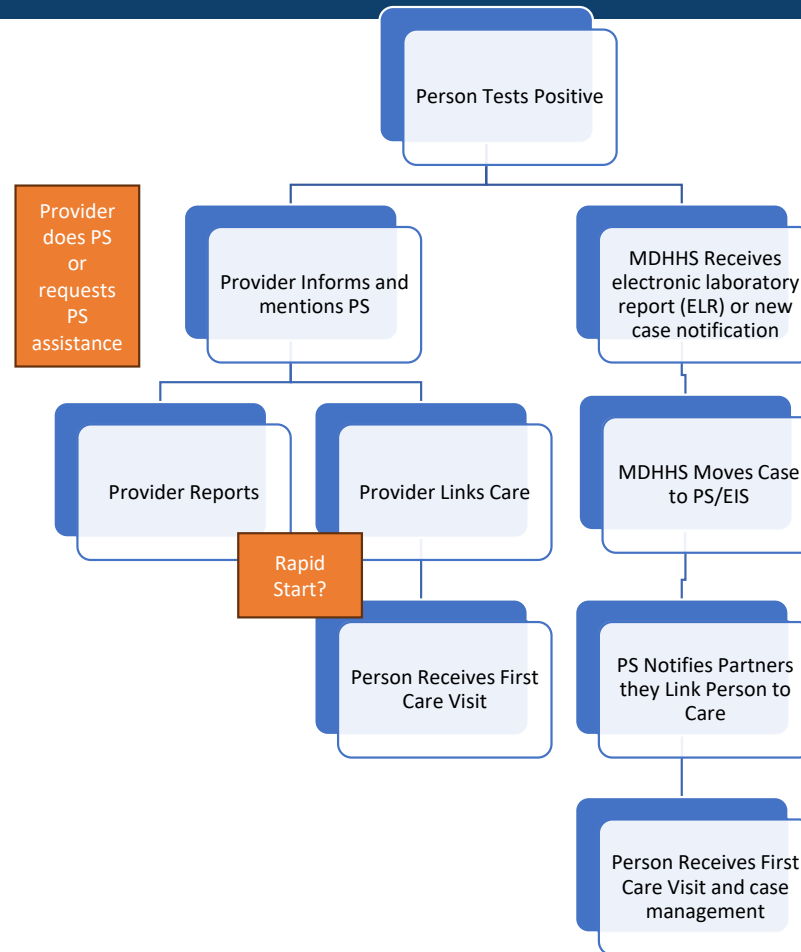
MDHHS provides services and administers programs to improve the health, safety, and prosperity of the residents of the state of Michigan.

Landscape of HIV Prevention/Care in Michigan



- Testing, Reporting, and Surveillance.
- Partner Services (PS).
- Linkage to Care.
 - Early Intervention Services (EIS)
 - Data To Care (D2C)
- Ryan White Program.
 - ADAP
 - Case Management
- Resources.

New Case Process Flow



Consent for Testing



- The law does not require that a patient or their authorized representative provide special or separate consent for HIV/AIDS testing; general informed consent for medical treatment is sufficient.
- Prior to ordering an HIV/AIDS test for a patient, a health care provider must first:
 - Inform the patient/authorized representative—verbally or in writing—that an HIV/AIDS test will be conducted
 - Offer the patient/authorized representative the opportunity to ask questions and decline the HIV/AIDS test
 - Documentation of HIV/AIDS testing in the medical record is only required if the patient or their authorized representative declines HIV/AIDS testing

HIV/STI Lab Reporting



- According to Michigan law, all HIV and STI diagnostic labs must be reported to MDHHS or the local health department within **24 hours of diagnosis or discovery**.
- Most major hospitals/laboratories in Michigan report lab/test results electronically.
- Labs are reported:
 - Electronically and imports through the laboratory/facility
 - Faxed for manual data entry – can be done by laboratory or diagnosing facility

Electronic Lab Reporting



- Collection date vs assignment date.
 - Average laboratory/hospital report time is between **4 -5 DAYS**
 - Average LMS processing time is **2-3 DAYS**
 - Average Surveillance case investigation time is **5-6 DAYS**
 - Total time from collection date to case assignment to DIS averages **9 DAYS**

HIV/STI Case Reporting

- According to Michigan law, all HIV and STI Case Report Forms (CRF) should be reported to MDHHS or the local health department within **7 days of diagnosis**.
- There are two HIV CRFs:
 - [Michigan Adult HIV Confidential Case Report Form](#)
 - [Michigan Pediatric HIV Confidential Case Report Form](#)

- Forms can be found on the MDHHS website.
- All forms should be faxed to MDHHS, Bureau of HIV/STI, 313-456-1580.

Fun Facts about Surveillance and Reporting



- You can call MDHHS anytime (is this person a new case? Are they in care? What do I do now? 313-245-3300).
- Everything you need to know about communicable disease reporting can be found in the Brick Book at www.Michigan.gov/CDInfo.
- Our staff have access to most health system EMRs around the state so when providers don't report HIV on the CRF our staff collect the data directly from the EMR (and use the information to fill in missing information).

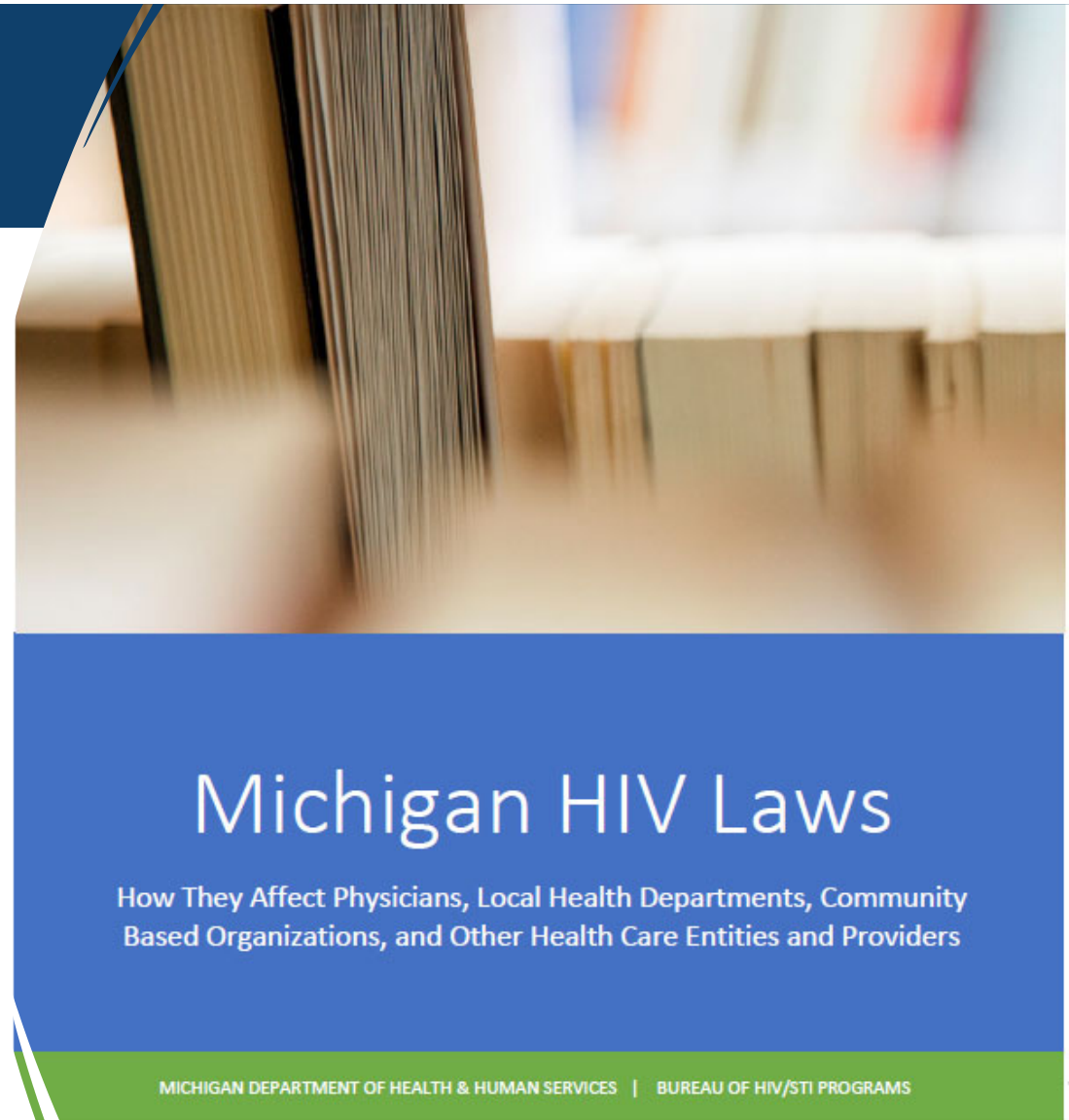


2024: Health Care Professional's Guide to Disease Reporting in Michigan

A summary of the Michigan
Communicable Disease Rules



- www.Michigan.gov/HIVSTI
- Topics covered:
 - Disclosure
 - Reporting
 - Data Sharing
 - Testing in Pregnancy
 - Consent for Testing
 - Mandatory Testing



Partner Services



- Legislative mandated program to help reduce the transmission of HIV and STIs (mostly syphilis) to sex and needle-sharing partners (for HIV) of persons.
- Authorized through Public Health Code 368—Public Act 333.5114a of 1988.
- Voluntary.
 - Linkage to care happens even if you don't name partners
- Operational through a network of MDHHS staff and local public health departments staff (called DIS).

Partner Services



- Disease Intervention Specialist (DIS) conduct one on one counseling to persons living with HIV and STIs to:
 - Provide education on disease/transmission/refer for care/support services.
 - Present options to notify partners (HD, Client, Physician, Combination).
 - Identify and contact partners for notification, testing, treatment & support services.

Partner Services in Action



- Hybrid Model of PS Delivery.
 - Syphilis=All MDHHS Staff
 - HIV in Detroit=MDHHS staff
 - HIV in most SE MI Counties and larger Counties (Kent, Ingham, Washtenaw, Genesee)=LHD Staff
 - HIV and Syphilis mostly up north=Central MI District Health Department
- We can do PS over the phone and use dating sites to find and notify partners.
- We can provide transportation for treatment and reminders of appointments and sometimes field delivered treatment.
- We have a special group dedicated to working with pregnant people.

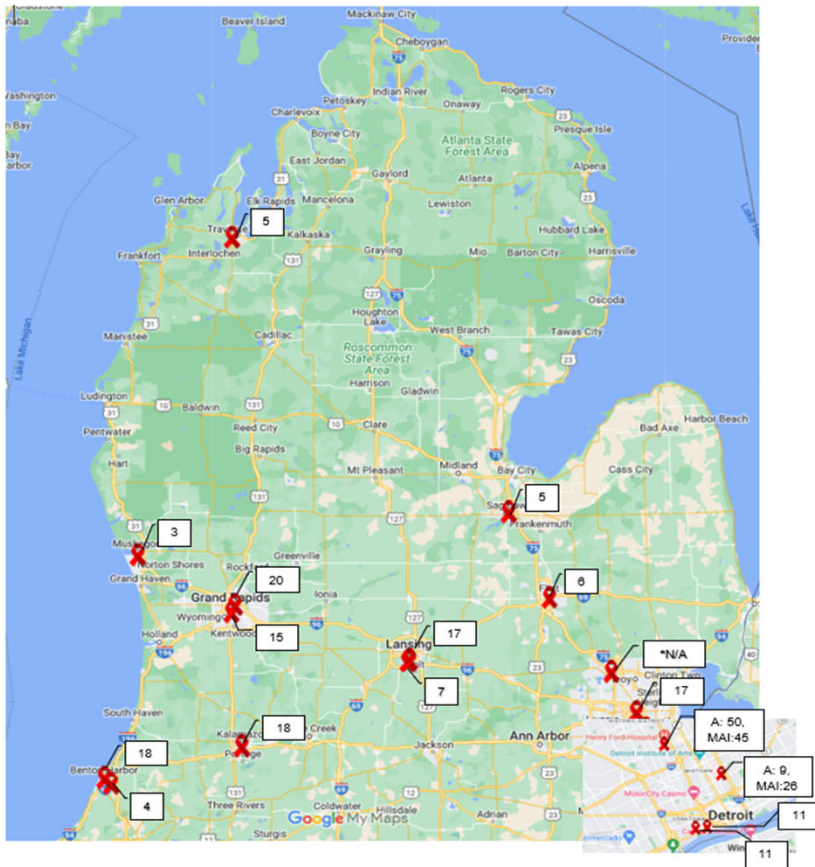
Linkage Programs



EIS

- The Early Intervention Services Programs place special emphasis on helping persons who are newly diagnosed with HIV to connect with medical care and other services.
- Linkage workers are dedicated experts who can:
 - Find a doctor or clinic
 - Apply for health insurance
 - Understand HIV medical treatment
 - Find support groups
 - Meet transportation, housing, food assistance, and emergency financial assistance needs

Statewide Capacity and Agencies



www.Michigan.gov/hivsti

HIV CARE RESOURCE GUIDE 2024

Then Ryan White HIV/AIDS
Program

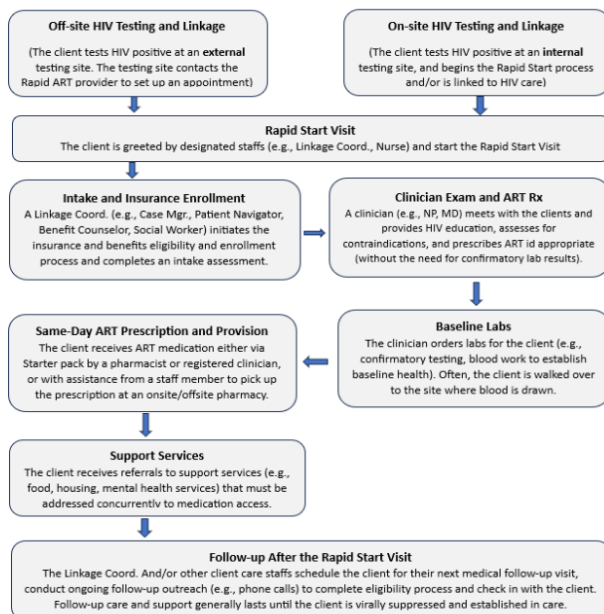
Then Program Resources

Search

Michigan Rapid Start ART (MiSTART)

Appendix

• MiStart Workflow



Source: Adapted from "Compendium of Best Practices in Provision of Rapid Start Services for People with HIV For Ryan White HIV/AIDS Program Funded Providers", CAI Global, 2023.

- Free Sample Starter Packs from Michigan Pharmaceutical Representatives (3–5-day sample starter packs)=Gilead, Jansen, ViiV.
- **Persons Appropriate.**
 - Nearly everyone with confirmed new diagnosis.
 - High clinical suspicion of acute HIV
 - Reactive rapid HIV result
 - Known HIV diagnosis re-engaging into care
- **Persons Not Appropriate.**
 - Complex/Unknown ART history
 - Untreated opportunistic infections
 - Reactive rapid with low-probability of HIV

Return to Care Unit



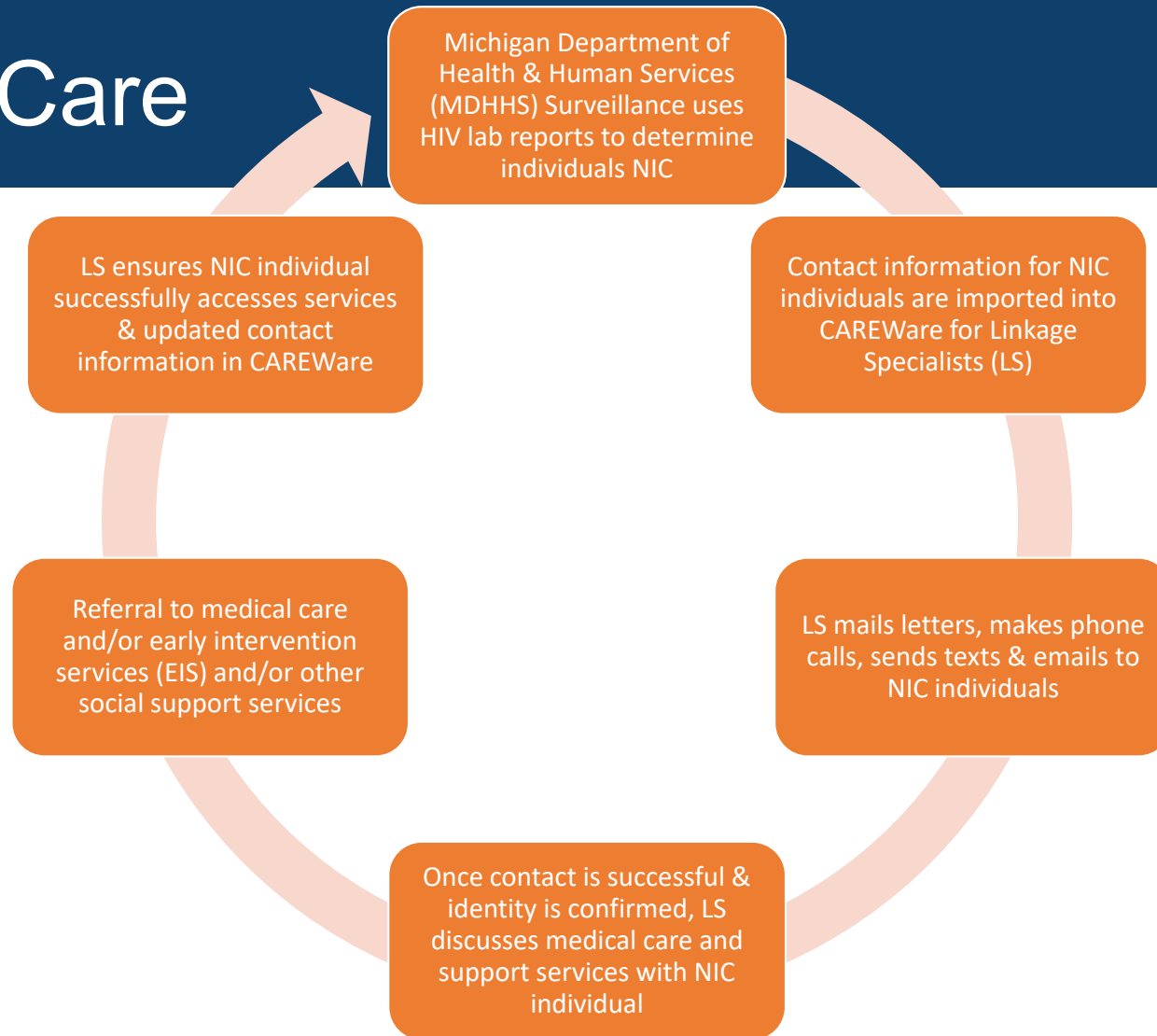
- Group at MDHHS who works at linking and re-linking people to care
- Referrals from DIS
- Folks who don't pick up their HIV medications
- People who move to Michigan
- Those out of care
- Leaving corrections

- Outside of Detroit:
Phone: 517-899-6084

MDHHS-LinkUpMI@michigan.gov

- In Detroit:
- Fatima E., MPH [\(313\) 410-5617](tel:(313)410-5617)
- Natelie M. [\(313\) 569-6023](tel:(313)569-6023)
- Brandon B. [\(313\) 402-4571](tel:(313)402-4571)

Data to Care



Ryan White Program

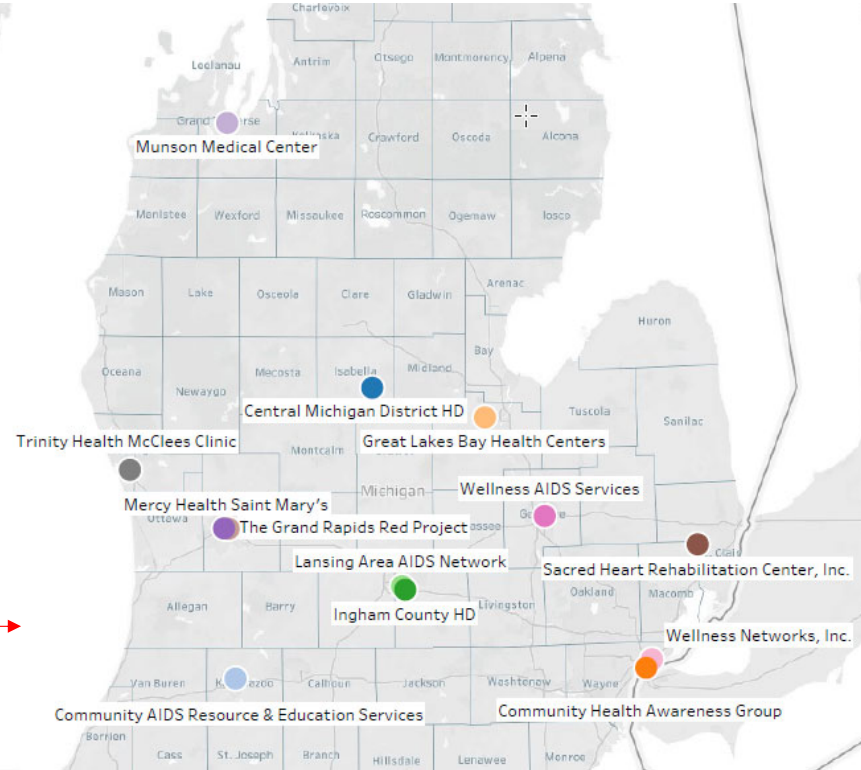
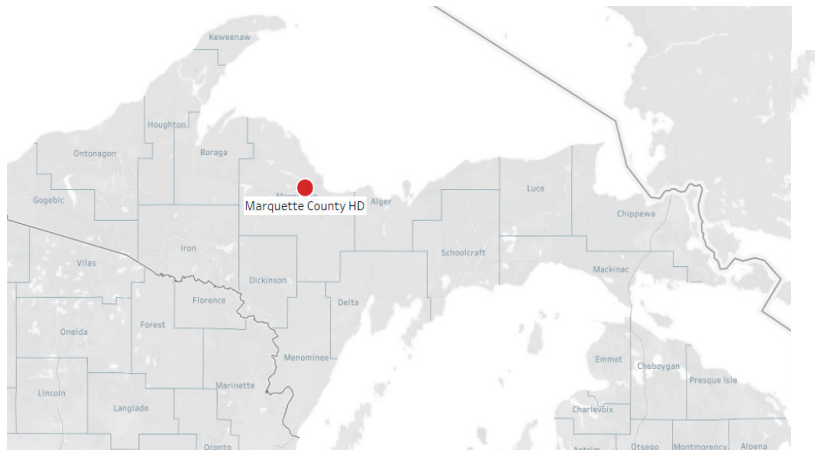


Ryan White Program

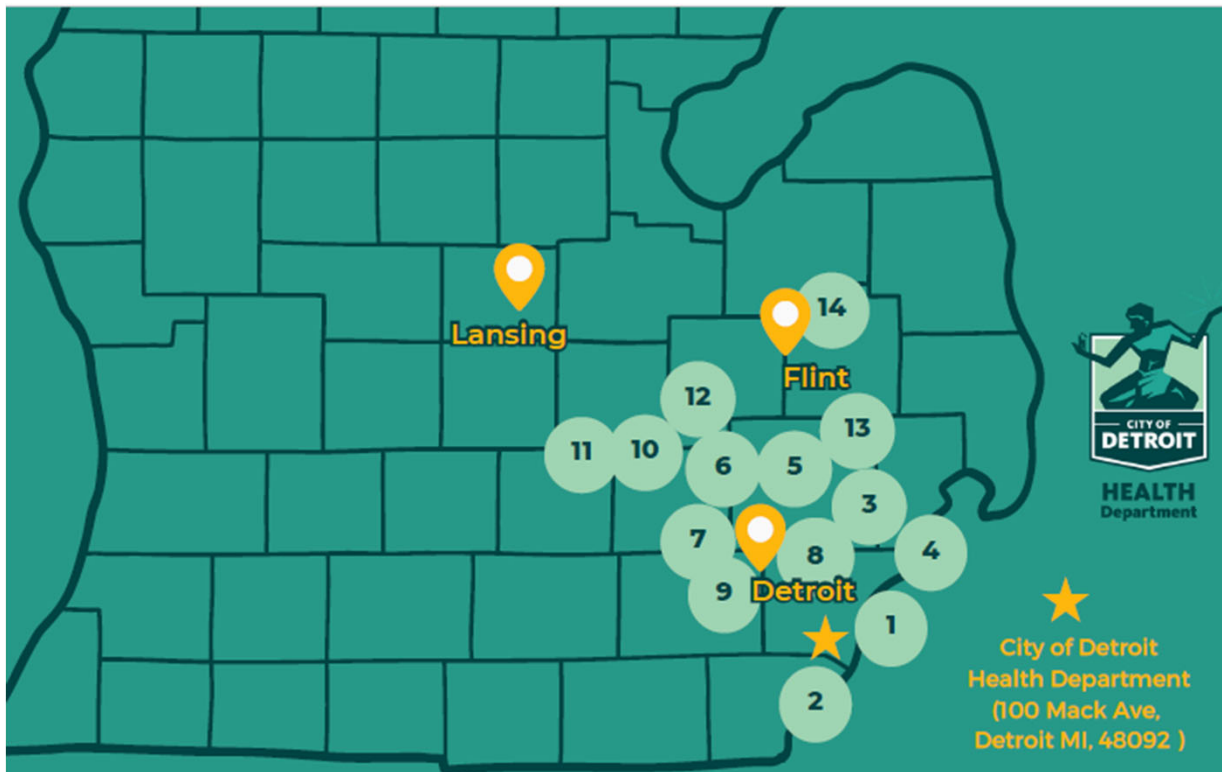


- Proof/Documentation of HIV positive status/diagnosis.
- Must reside in the state of Michigan.
- Must have an income \leq 500% of the most current Federal Poverty Level.
- Must be underinsured or uninsured for applicable Ryan White services that are reimbursable through third party payers.
- Immigration status is irrelevant for the purposes of eligibility for Ryan White services. MDHHS sub-recipients should not share immigration status with immigration.

Ryan White Part B Program



Part A Map



Ryan White Program



Medical case management services (including treatment adherence)

Outpatient/ambulatory medical care
ADAP (AIDS Drug Assistance Program)
AIDS pharmaceutical assistance
Oral health care
Early intervention services
Health insurance premium & cost sharing assistance
Home health care
Home and community-based health services
Mental health services
Medical nutrition therapy, including nutritional supplements

Non-medical case management

Childcare services
Emergency financial assistance
Food bank/home-delivered meals
Health education/risk reduction
Housing services
Legal services
Linguistics services
Medical transportation
Outreach services
Psychosocial support services
Referral for health care/supportive services
Rehabilitation services
Substance Abuse Treatment Services-
Outpatient

What is the Michigan Drug Assistance Program (MIDAP)?



- The Michigan Drug Assistance Program (MIDAP) is a federally funded program that provides HIV-related (and other related medications) to eligible applicants who have limited or no access to insurance coverage.
- In order to be eligible for MIDAP, applicants must meet the following criteria:
 - Provide proof of HIV Status
 - Be a resident of the State of Michigan
 - Have a gross income between 138%-500% of the Federal Poverty Level (FPL)
 - Not eligible for any other program. MIDAP is the payer of last resort

MIDAP Prescription Coverage Types



Full Coverage (No Insurance)
Pay the full cost of medications

Medicaid: Temporary Full Coverage
Pay the full cost of medications

Private Insurance: Employer Sponsored
Copays

Private Insurance: Individual
Copays

Medicare Part C (Advantage Plan)
Premiums, copays, coinsurance & deductibles

Medicare Part D (Prescription Plan)
Premiums, copays, coinsurance & deductibles

VA, Tricare or other Military Healthcare
Copays

Indian Health Services
Copays

COBRA
Premiums, copays, coinsurance & deductibles

Qualified Health Plan/ACA
Premiums, copays, coinsurance & deductibles

Resources



You Test We Do the Rest



HIV & SYPHILIS: YOU TEST, WE DO THE REST

STI/HIV TESTING

- You (a health care provider) order testing (blood tests/site specific based on the STIs). HIV & Syphilis testing **must include confirmatory blood testing** ([click for more](#)).
- Labs are required by law to report reactive results with state and local health departments (LHDs). Case reporting details must be submitted to the state for all confirmed cases (*instructions on reporting are available at www.michigan.gov/HIVSTI*).



DIS OUTREACH

- DIS, or Disease Intervention Specialists, work in state and LHDs to ensure patients are treated and stop transmission of STIs.
- All syphilis and HIV cases are assigned to a DIS to ensure reporting, follow-up, etc.
- DIS assist providers across the state on issues like new diagnoses, sharing comprehensive syphilis history & discussing treatment.



FOLLOW-UP: DIS CAN...

- Provide access to medications used to treat STIs (e.g., bicillin) if access is limited or your patient is not insured.
- Make sure patients understand treatment regimen (i.e., taking all meds even if



PARTNER SERVICES

- Partner Services staff (including DIS) can also reach out to directly notify and provide follow-up for partners of your patients.
- Partner Services include testing and treatment of partners, and the same level of DIS follow-up that your patients receive.



HOW CAN YOU HELP

- Increase testing and awareness that someone from the health department will reach out.
- Inform patients that their personal information and anything they share with DIS is confidential.
- **Destigmatize!** Sexual health care is health care. Your patients should feel no guilt or shame for getting tested and taking ownership of their sexual health.

Communication Materials



Michigan Ryan White Services Eligibility

- **Proof of HIV status:**
Must be HIV-positive.
- **Proof of income:**
Must not exceed 500% of Federal Poverty Line.
- **Proof of Michigan residency.**
- **Proof of insurance status:**
Must be underinsured or uninsured for applicable Ryan White services that are reimbursable through third party payers.



Michigan.gov/HIVSTI

Ryan White HIV/AIDS Program



Disclaimer:
The Michigan Department of Health and Human Services (MDHHS) does not discriminate against any individual or group on the basis of race, national origin, color, sex, disability, religion, age, height, weight, familial status, partisan considerations, or genetic information. Sex-based discrimination includes, but is not limited to, discrimination based on sexual orientation, gender identity, gender expression, sex characteristics, and pregnancy.

MDHHS-Pub-1656 (1-23)



WHAT IS PARTNER SERVICES?

Partner Services is a free program that helps people with human immunodeficiency virus (HIV) and some sexually transmitted infections (STIs) contact their sex and needle-sharing partners and help them get tested.

Notifying your current and past sex and/or needle-sharing partners is an important step after being diagnosed with an STI or finding out that you are living with HIV. You don't have to do this alone. Partner Services can notify your partners in a way that protects your confidentiality.

We are here for you on this new journey.

Thanks to advances in treatment, people with HIV are living long and healthy lives. You probably have had many feelings since learning you have been diagnosed with HIV. That is normal. Give yourself space to process the news. Even if you do not feel sick, the sooner you get into care, the more likely you and your doctor can work as a team to treat your HIV.

The Michigan Department of Health and Human Services (MDHHS) HIV team is here to support your needs along the way.

Someone from our team may have already contacted you or may contact you soon. We want to hear from you about what is going well and anything you may need to live your best life.

From tough conversations to prescription assistance, we can help you. This brochure describes some programs that can help keep you and those you care about healthy. Scan the QR codes to learn more about each program.



For additional information on Partner Services, scan the QR code above or visit:
Michigan.gov/HIVSTI
313-269-7573

For general information on HIV/STIs call the Michigan statewide HIV/STI hotline:
miundfcd.org
1-800-872-2437

For additional information needed by health care professionals with questions regarding HIV disease management contact:
Michigan HIV Consultation Program
(Henry Ford Health System) 24/7 at
313-675-0332



The Michigan Department of Health and Human Services (MDHHS) does not discriminate against any individual or group on the basis of race, national origin, color, sex, disability, religion, age, height, weight, familial status, partisan considerations, or genetic information. Sex-based discrimination includes, but is not limited to, discrimination based on sexual orientation, gender identity, gender expression, sex characteristics, and pregnancy. The images used in this brochure are for illustrative purposes only. The persons depicted in these images are models.



PARTNER SERVICES

Helping keep you, your partners and your community healthy.



Let Us Support You Along Your Journey of Living With HIV

MICHIGAN.GOV/HIVSTI



Disclaimer:
The Michigan Department of Health and Human Services (MDHHS) does not discriminate against any individual or group on the basis of race, national origin, color, sex, disability, religion, age, height, weight, familial status, partisan considerations, or genetic information. Sex-based discrimination includes, but is not limited to, discrimination based on sexual orientation, gender identity, gender expression, sex characteristics, and pregnancy.

The images used in this brochure are for illustrative purposes only. The persons depicted in these images are models.



MDHHS-Pub-1710 (06-23)





SHOARS

STI/HIV Operations and Resource System



The **STI/HIV Operations and Resource System (SHOARS)** is a new customer relationship management system that can be accessed via MiLogin. SHOARS allows the Bureau of HIV and STI Programs (BHSP) Partners to engage with the diverse resources of BHSP.

- MiLOGIN for Business
 - [MiLogin - Login \(michigan.gov\)](https://michigan.gov)

Then: "Michigan Relations Collaborations & Resources"

Then "SHOARS"

MDHHS Website



Doxycycline Post-Exposure Prophylaxis (Doxy PEP)

Home > Keeping Michigan Healthy > Chronic Diseases > HIV/STI > Doxy PEP

Doxycycline as STI Post-Exposure Prophylaxis (Doxy PEP)

Doxycycline post-exposure prophylaxis (doxy PEP) has proven to reduce the chance of getting a bacterial sexually transmitted infection (STI) for gay, bisexual, and other men who have sex with men and transgender women that are more likely to get these infections (specifically, syphilis, chlamydia, gonorrhea). The Michigan Department of Health and Human Services (MDHHS) highly encourages the adoption of doxy PEP to combat alarming increases in bacterial STIs in Michigan.

The Centers for Disease Control and Prevention (CDC) recommends health care providers discuss doxy PEP with all gay, bisexual, and other men who have sex with men and transgender women with a history of at least one bacterial STI (syphilis, chlamydia, gonorrhea) in the last 12 months. If offering doxy PEP, health care providers should write a prescription for self-administration of 200 mg of doxycycline within 72 hours of sex.

MDHHS's 340B program can be used by covered entities to procure medications for patients to be treated with doxy PEP. Doxy PEP unit dose (UD) 200 mg packets and doxy PEP in #60 bottles (can be used 30 times) are both available through the warehouse via your normal ordering process.

Resources

- Clinical Guide: 2024 (CDC)
- Doxy as STI PEP



Home > Keeping Michigan Healthy > Chronic Diseases > HIV/STI > PrEP > PrEP and Black Women

Pre-exposure prophylaxis (PrEP) is medicine that can be taken to reduce a person's chances of getting HIV from sex or sharing drug injection equipment. PrEP is for people who do not have HIV but have the chance of getting it. Taking PrEP as prescribed by a health care provider can reduce the chances of getting HIV by up to 99% from sex and by at least 74% from sharing drug injection equipment.

PrEP is safe and effective for women. "Mahogany Blue" is dedicated to empowering women by recognizing the unique barriers Black women encounter in accessing HIV prevention tools like PrEP.

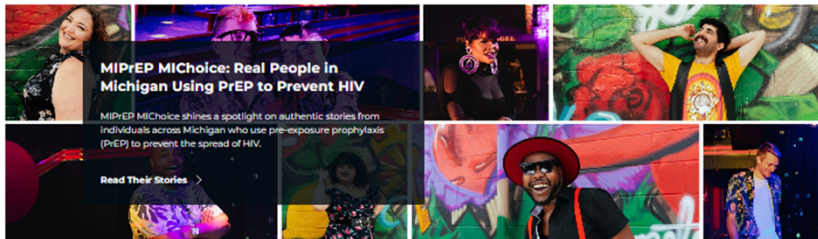
"Mahogany Blue" provides the tools and resources to take control of your own sexual health and allows you to make informed decisions and take proactive steps to protect yourself from getting HIV.

If you want to learn more about PrEP or are ready to take the next steps, you can use our [resource finder](#) to get a list of services and providers that best fit your needs.

[Learn More About PrEP and Take the Next Steps](#)

HIV & STIs in Michigan

Home > Keeping Michigan Healthy > Chronic Diseases > HIV/STI



MIPREP MiChoice: Real People in Michigan Using PrEP to Prevent HIV

MIPREP MiChoice shines a spotlight on authentic stories from individuals across Michigan who use pre-exposure prophylaxis (PrEP) to prevent the spread of HIV.

[Read Their Stories](#)

Find HIV and STI Testing

Mpx Information

Doxycycline as STI Post-Exposure Prophylaxis (Doxy PEP)



Find HIV & STI Testing and Services



HIV & STIs 101



Pre-Exposure Prophylaxis (PrEP)



News & Announcements



Training & Events



Michigan Drug Assistance Program (MIDAP) & Michigan Dental Program (MDP)

Time for Questions....



Thank you!

Katie Macomber
macomberk@michigan.gov